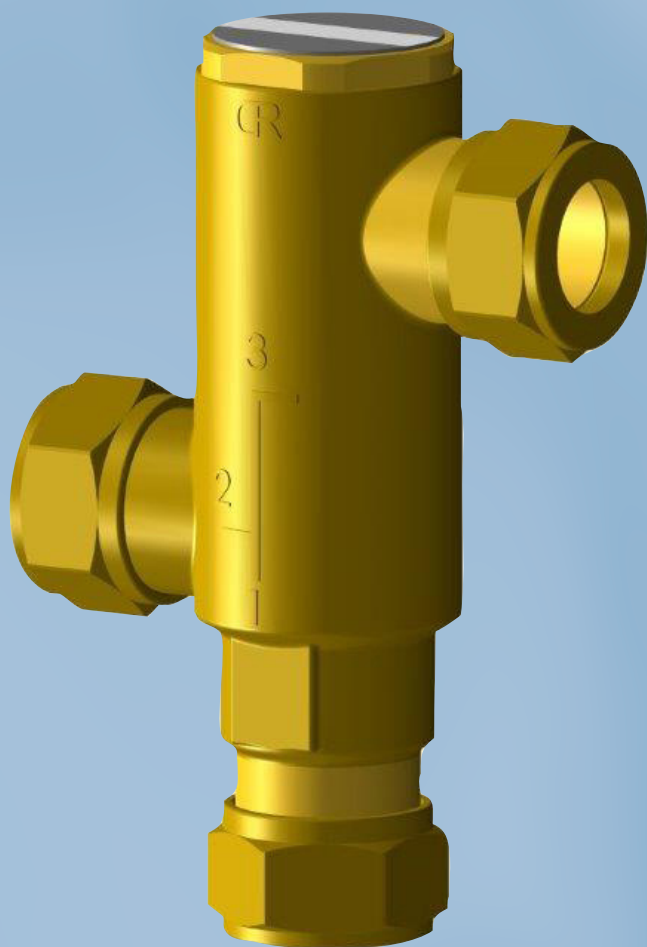


Diverter DN15

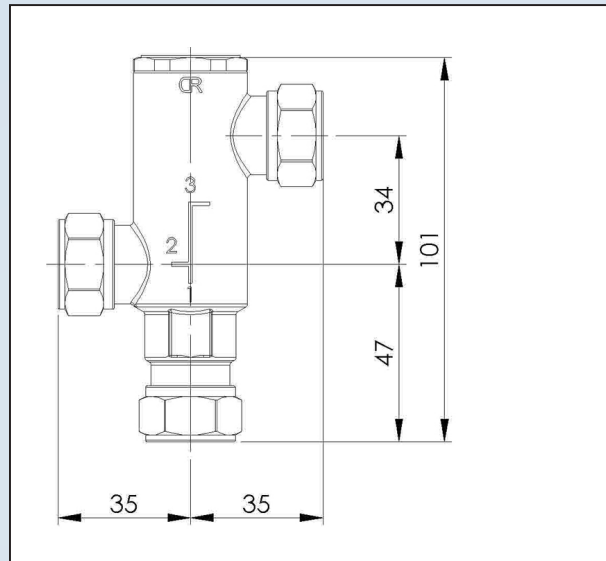
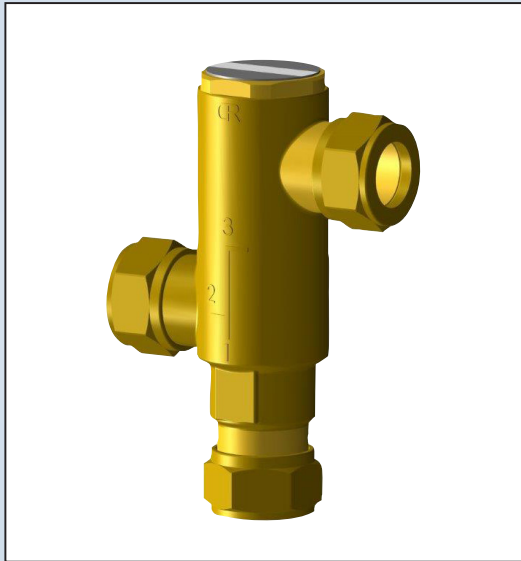


**OSU
RE**



Diverter DN15

15 mm compression



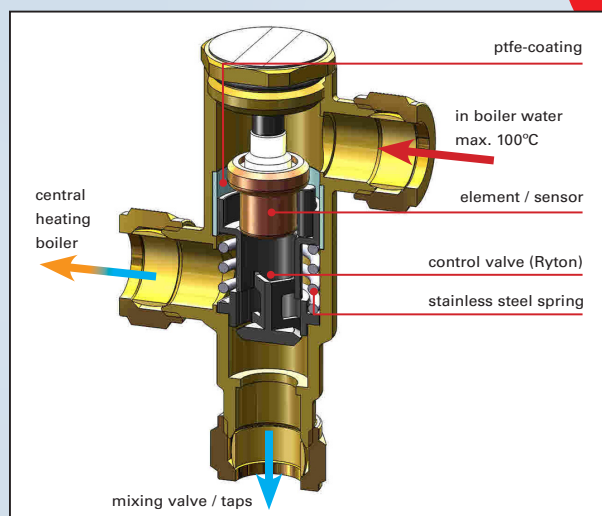
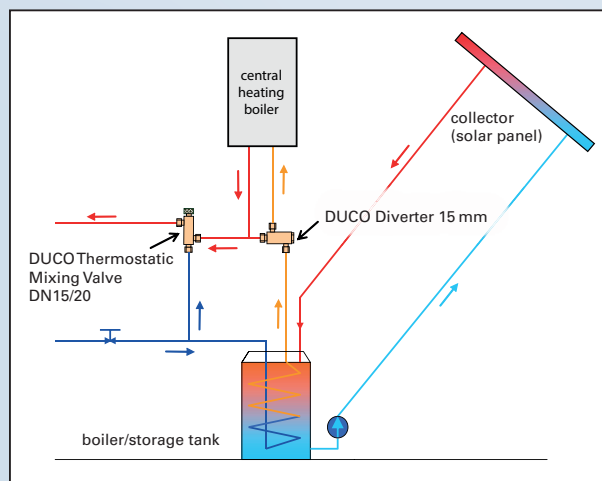
The diverter has to be mounted between the storage tank and the central heating boiler. If the storage tank is able to provide a sufficient amount of hot water, the diverter will lead the water directly to the mixing valve / taps.

If the storage tank is no longer able to provide a sufficient amount of hot water, the diverter will lead the water to the central heating boiler (3 = in, 2 = out) for reheating.

setting	50°C
max. working pressure	14 bar
min. working pressure	0,2 bar
max. hot water temperature	100°C
flowrate	1.200 l/h - 1 bar
brass body	CW625N

Code

1352-0-01-01



PenTec bv
Edisonweg 7
3442 AC Woerden
The Netherlands

Tel. +31 (0)182 503 100
E-mail info@pentecbv.nl
Internet www.duco.nl
www.pentecbv.nl

