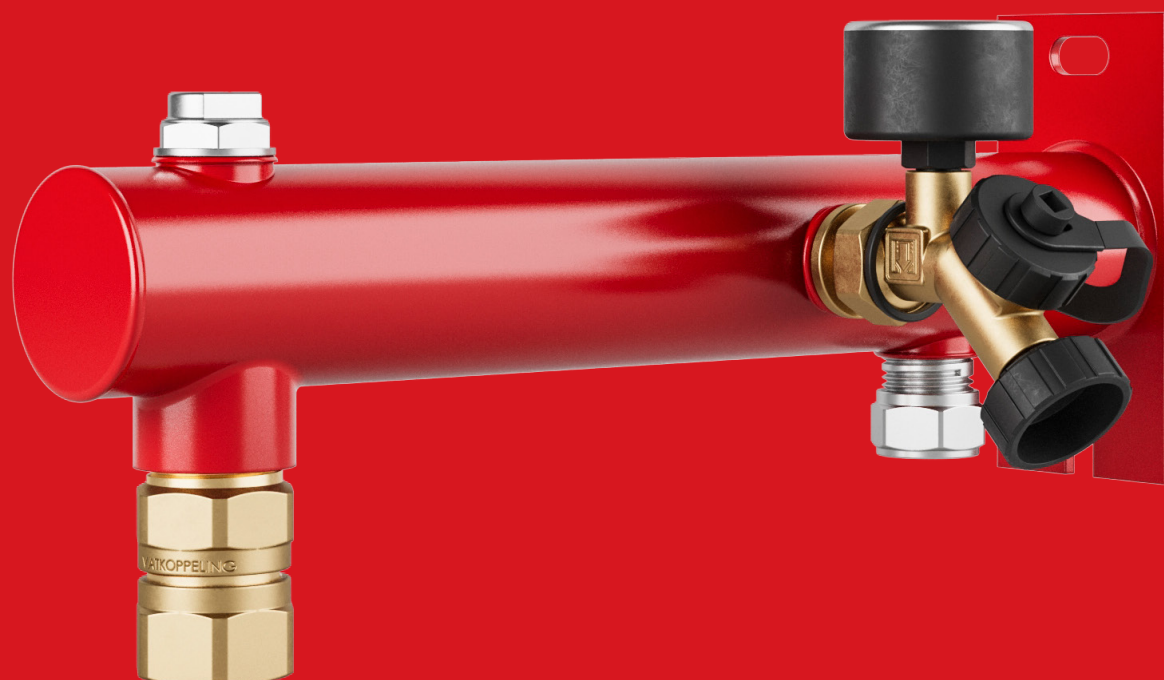


Expansion Vessel Console EVC - Wivak



DUCO

DUCOnsole 2 x 1/2" x 3/4" EVC quick-release coupling - Wivak 15mm compression connection + 1/2" air-vent

Steel coated console with wall plate to connect expansion vessels up to and including 25 litres to a wall.

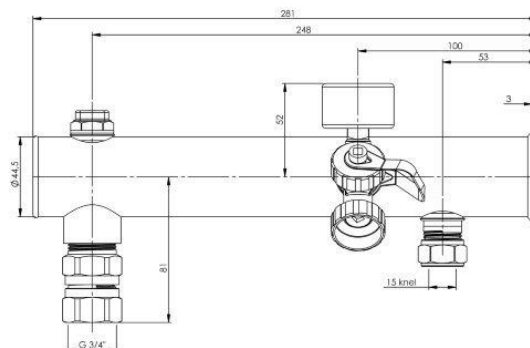
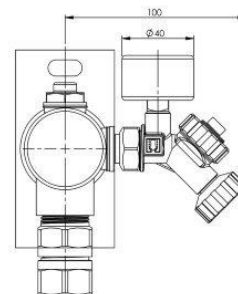
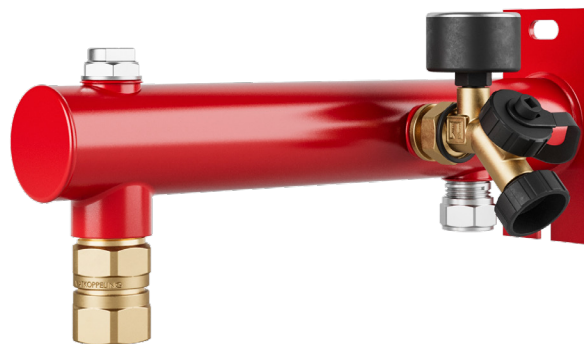
The console has a 1/2" air-vent and 15 mm compression connection for the water pipe.

Also a 3/4" quick-release coupling (VC) and Filling Valve (WIVAK 2000) is mounted. The WIVAK 2000 makes it very easy to fill up the system.

Just connect the water hose on the filling point of the Filler and check the bar pressure.

The EVC makes it possible to check, if needed to replace, easily the correct working of the expansion vessel without draining the entire system.

Colour: Red (RAL 3013)



Expansion Vessel Console + EVC Red

Article number

1476-6-62-01



PUCO

PenTec bv
Edisonweg 7
3442 AC Woerden
The Netherlands

Tel. +31 (0)182 503 100
E-mail info@pentecbv.nl
Internet www.duco.nl
www.pentecbv.nl